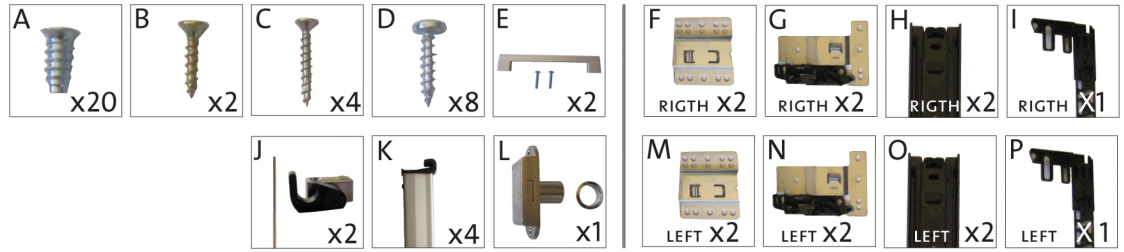
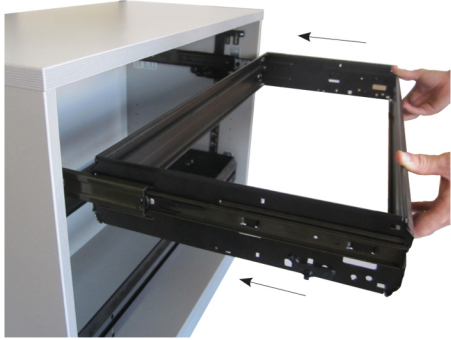


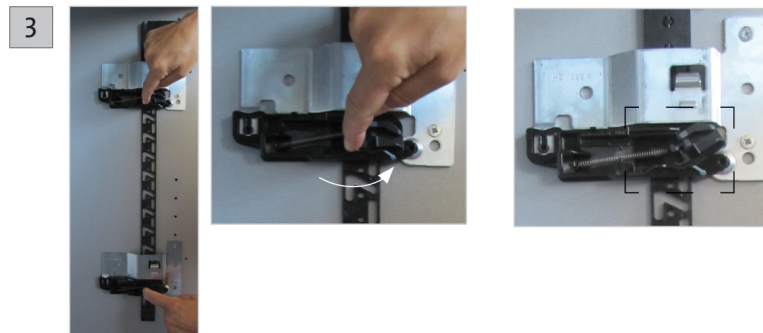
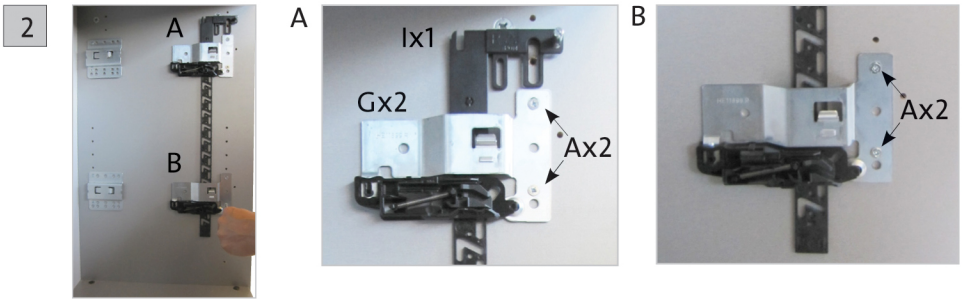
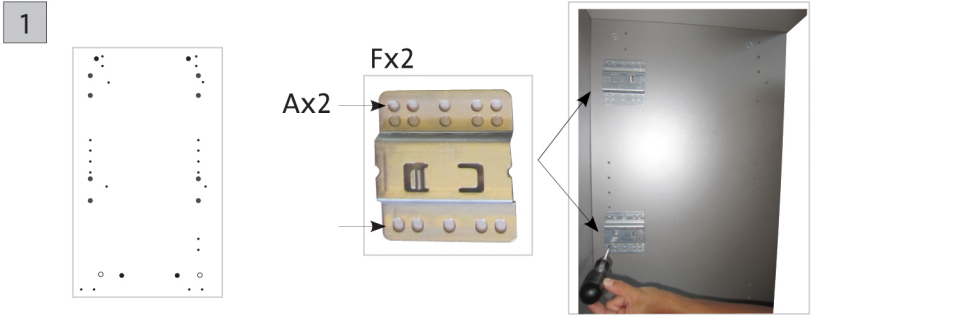
PIEZAS Y HERRAMIENTAS
PARTS AND TOOLS
TEILE UND WERKZEUGE



1512AC



! MONTAR PRIMERO EL LADO DERECHO
ASSEMBLY THE RIGHT SIDE / MONTIEREN SIE ZUERST DIE RECHTE SEITE



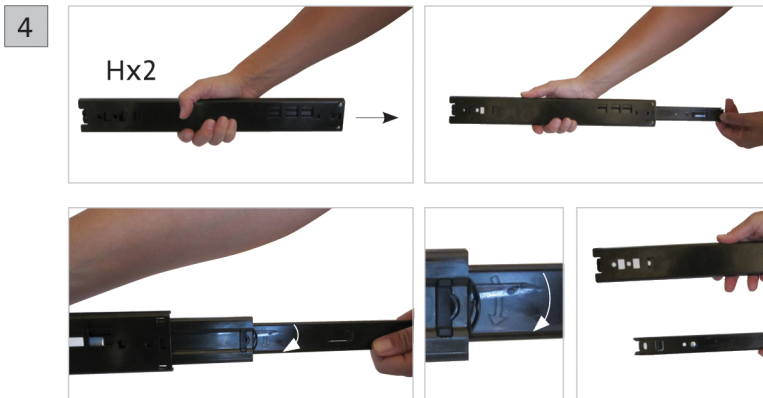
GRACIAS POR ESCOGER UN PRODUCTO ROCADA. PARA CUALQUIER OTRA NECESIDAD NO DUDE EN CONSULTAR NUESTRA PAGUINA WEB WWW.ROCADA.COM

THANK YOU FOR CHOOSING A ROCADA PRODUCT. FOR ANY OTHER NEED DOES NOT DOUBT OF CONSULTING OURS WEBSITE WWW.ROCADA.COM

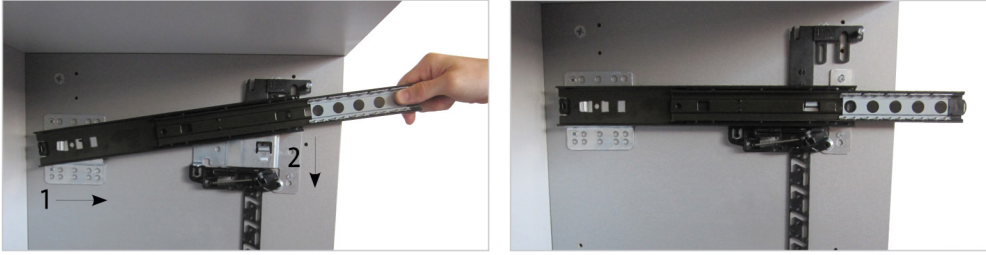
VIELEN DANK, DA- SIE SICH FÜR EIN ROCADA PRODUKT ENTSCIEDEN HABEN. WENN SIE MEHR ÜBER UNS ERFAHREN ODER UNSERE SERVICEANGEBOTE NUTZEN MÖCHTEN - BESUCHEN SIE UNS UNTER WWW.ROCADA.DE



www.rocada.com
rocada@rocada.com



6



REPETIR EL MONTAJE PARA EL LADO IZQUIERDO

REPEAT THE PROCESS TO ASSEMBLY THE LEFT SIDE / WIEDERHOLEN SIE DEN MONTAGEVORGANG AUF DER LINKEN SEITE

7



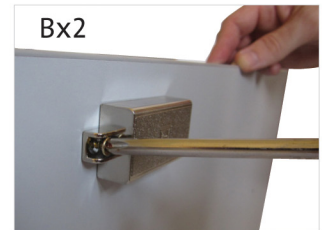
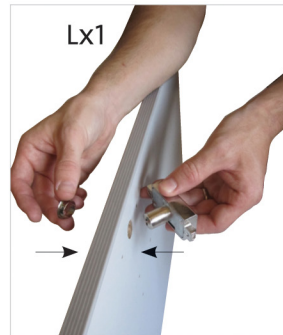
8

! POSICIÓN CORRECTA
RIGHT POSITION
RICHTIGE POSITION

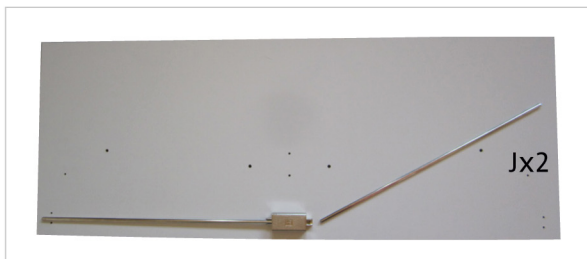
ARRIBA
Up



ABAJO
Down



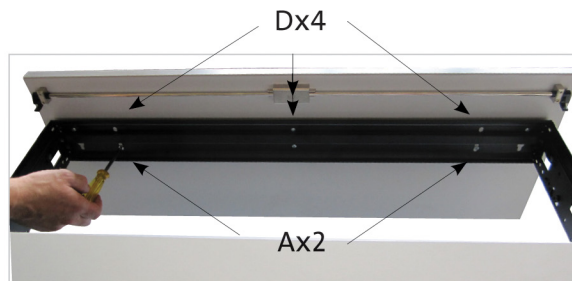
9



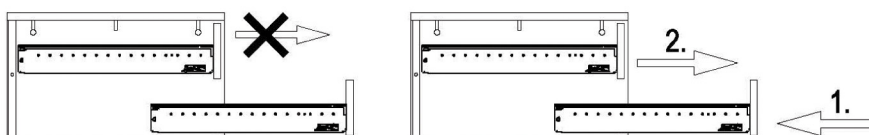
10



11



12



ARMARIOS CON SISTEMA DE CIERRE CENTRALIZADO I ANTIVUELCO

CUPBOARDS WITH LOCKING SYSTEM AND ANTI TOPPLE DEVICE

SCHRÄNKE MIT ZENTRALVERRIEGLUNG UND AUSZUGSSPERRE